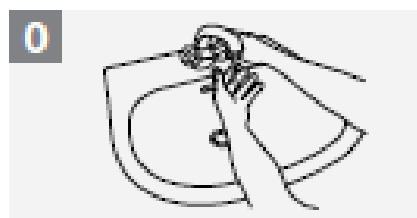


How to Handwash?

WASH HANDS WHEN VISIBLY SOILED! OTHERWISE, USE HANDRUB



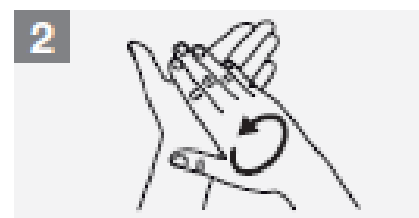
Duration of the entire procedure: 40-60 seconds



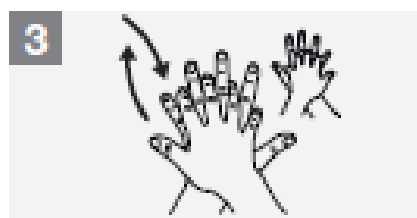
Wet hands with water;



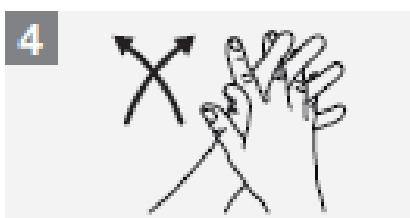
Apply enough soap to cover all hand surfaces;



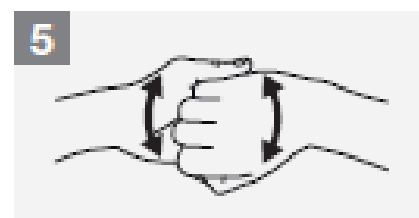
Rub hands palm to palm;



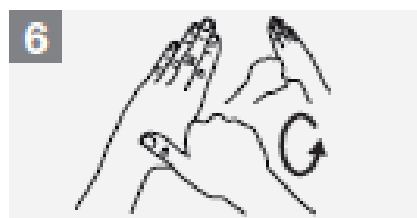
Right palm over left dorsum with interlaced fingers and vice versa;



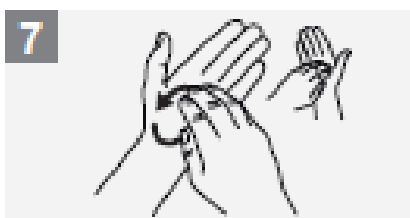
Palm to palm with fingers interlaced;



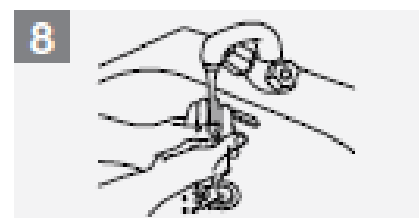
Backs of fingers to opposing palms with fingers interlocked;



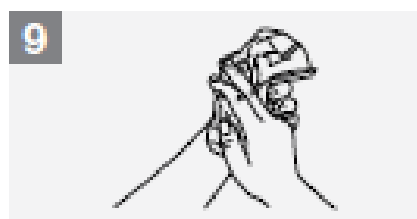
Rotational rubbing of left thumb clasped in right palm and vice versa;



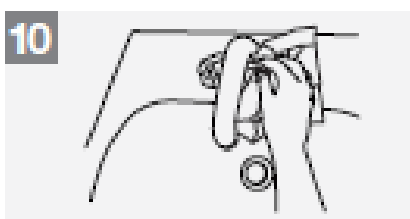
Rotational rubbing, backwards and forwards with clasped fingers of right hand in left palm and vice versa;



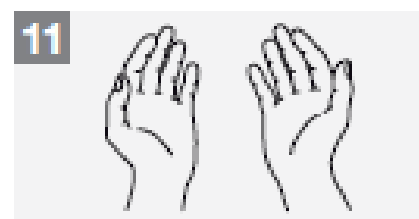
Rinse hands with water;



Dry hands thoroughly with a single use towel;



Use towel to turn off faucet;



Your hands are now safe.



World Health
Organization

Patient Safety

A World Alliance for Safer Health Care

SAVE LIVES

Clean Your Hands

All reasonable precautions have been taken by the World Health Organization to verify the information contained in this document. However, the published material is being distributed without warranty of any kind, either expressed or implied. The responsibility for the interpretation and use of the material lies with the reader. In no event shall the World Health Organization be liable for damages arising from its use. WHO acknowledges the Hôpital Universitaire de Genève (HUG), in particular the members of the Infection Control Programme, for their active participation in developing this material.

May 2009

SHARPS AND INFECTIOUS WASTE

5 SAFETY PRIORITIES

1. Practice Regular Hand Hygiene and Care

- Remember how infection spreads
- Hands transfer bacteria and viruses from surfaces through nose, mouth, eyes.
- Don't touch your face when handling infectious waste.
- Broken skin harbours germs and allows another entry point via the largest organ in our body – the skin. Take care of your skin.

2. Biohazardous Waste Containers

- Correct selection of containers to segregate waste streams
- Rigid containers for sharps
- Never put fingers into sharps containers

3. Personal Protective Equipment

- Separate yourself from bacteria and viruses
- PPE: Gloves, footwear, eyewear, face shield, dust mask, long sleeve clothing, pickup sticks, shovels, spill kits

4. Handling Procedures

- Always treat sharps as potentially infectious
- Follow safe work method procedures for pickup, deposit into correct container, safe disposal for incineration
- Never touch the needle, put container down close to sharp, place sharp pointing down into container, close the lid

5. Managing Needlestick Injury

- Stay calm – infection is rare
- Allow wound to bleed freely
- Immediately wash with running water and soap, rinse, dry
- Cover with bandaid or dressing
- Report to your supervisor
- Seek medical advice on HIV, Hepatitis testing, vaccination and counselling.

